



# ASPIRE

— TO MOVE —



## Oak Street, Bath, BA2

A wonderful two bedroom Georgian house with rear garden, on the fringes of the city centre, offered unfurnished and available from the 12th of September.

The house occupies a most convenient position just a few minutes level walk from the extensive shops and amenities both in the city centre and Widcombe area. The house is also situated in a handy spot for those needing access to Bath Spa station. Please note the property is located around 50metres from the train line.

**£1,500 PCM**



# Oak Street, Bath, BA2

- Two bedroom house
- Available 12th September
- Holding deposit: £346
- Close to city centre
- Rear garden
- On street permit parking
- Unfurnished
- Council tax band B

A wonderful two bedroom Georgian house with rear garden, on the fringes of the city centre, offered unfurnished and available from the 12th of September.

The house occupies a most convenient position just a few minutes level walk from the extensive shops and amenities both in the city centre and Widcombe area. The house is also situated in a handy spot for those needing access to Bath Spa station. Please note the property is located around 50metres from the train line.

The living accomodation offers flexible space. Downstairs there is an open plan living/dining room with storage beneath the stairs. The kitchen is located to the rear and has base units and shelving as well as oven, hob, fridge/freezer and washing machine. Upstairs there are two bedrooms, with the main bedroom occupying the rear section of the house. The bathroom is newly fitted and has shower over bath, WC and sink. The property also benefits from newly fitted bespoke sash 'Georgian style' windows, with double glazed panes.

The easterly rear garden is mainly laid to gravel, surrounded by attractive planted borders and with a very useful side access.

The property is offered unfurnished and is available from the 12th of September. Initial 12 month contract, the property would best suit a professional couple or small family.

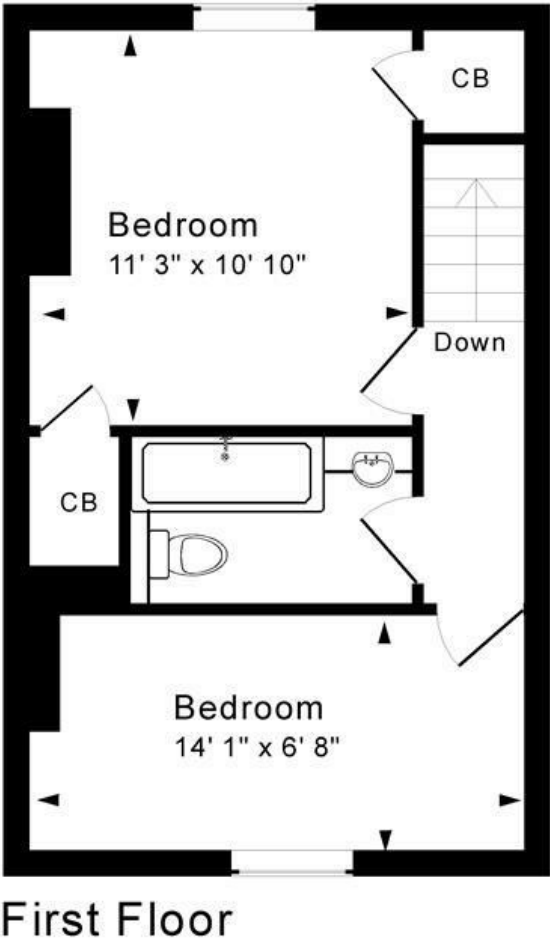
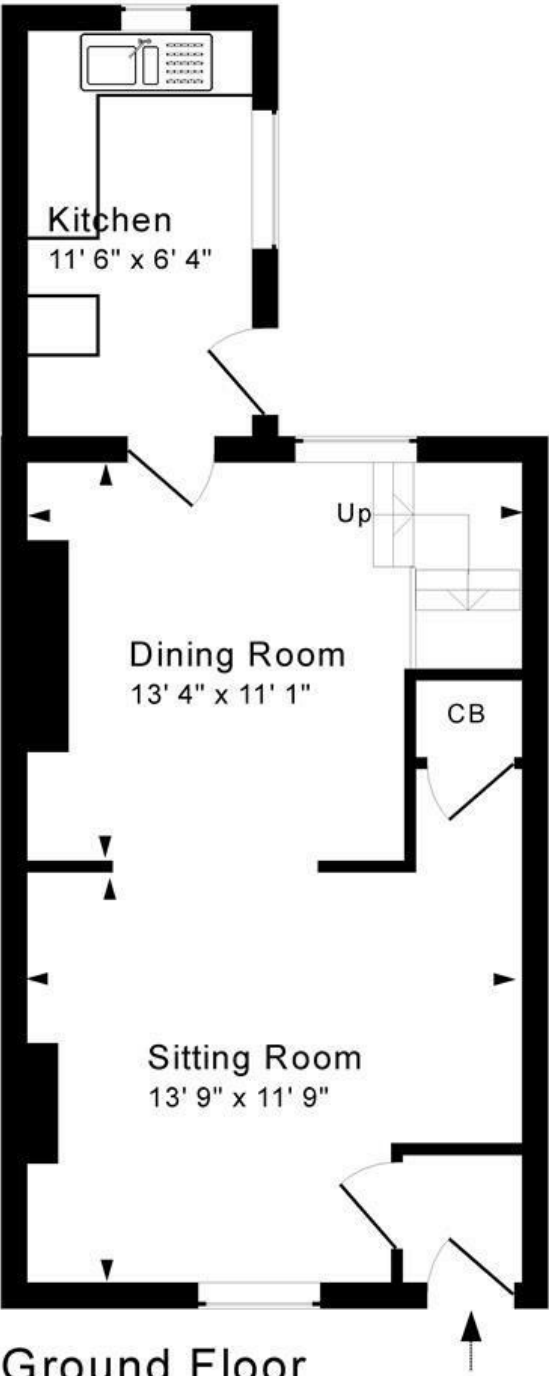
Council tax band B: £1,722.41







Floor Plan



Approx. Gross Internal Floor Area 745 Sq. Ft. / 69 Sq. M  
Includes Conservatories. Excludes Garages, Porches etc. unless stated  
For identification purposes only. Not to scale. Copyright Jemesis Ltd 2022  
Drawing Number:172-0489  
1 Oak Street, Bath, BA2 3BR.

These particulars, whilst believed to be accurate are set out as a general outline only for guidance and do not constitute any part of an offer or contract. Intending purchasers should not rely on them as statements of representation of fact, but must satisfy themselves by inspection or otherwise as to their accuracy. No person in this firms employment has the authority to make or give any representation or warranty in respect of the property.

